

FUJIFILM PRESSURE DISTRIBUTION MAPPING SYSTEM for PRESCALE

FPD-8010E



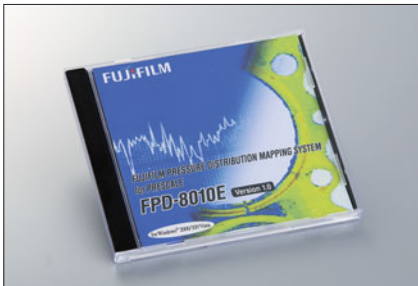
Easy to Read, Easy to Understand Prescale Pressure Analysis in numerical format is now available!

FPD-8010E provides a wide range of effective presentation and report functions utilizing FPD-8010E software and a scanner to digitize Prescale outputs to allow the user to produce multi-faceted measurement data such as pressure distribution and enlargement, cross-sectional distribution, and 3-D image display. This serves to accelerate product development and improved yields based on detailed multi-faceted measurement data and analysis.

System Configuration

● **Dedicated Software**

Converts Prescale density values into pressure values.



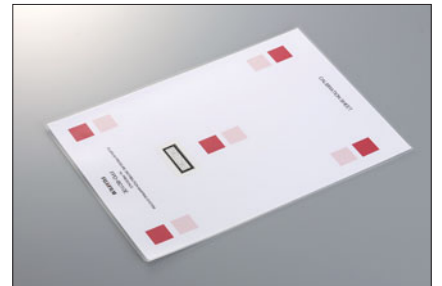
● **Dedicated Cover**

This manuscript hold-down scanner cover improves date-read precision.

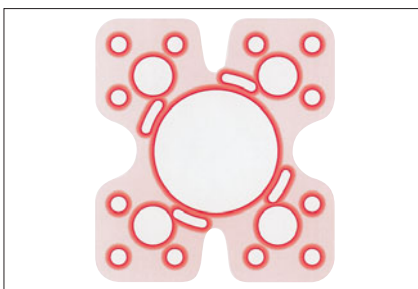


● **Calibration Sheet**

The calibration sheet limits scanner-read errors to a fixed range.



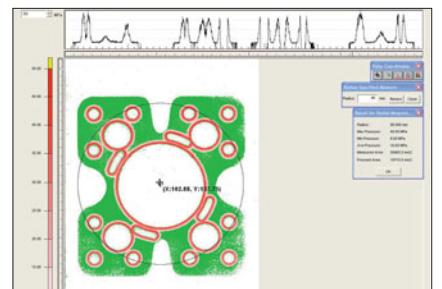
How to use



① Prepare the colored Prescale.



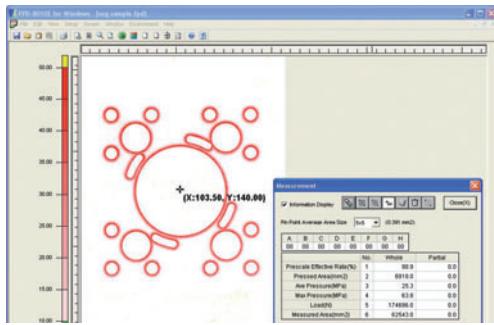
② Scan Prescale Samples
(Scanner purchased separately by user)



③ Perform analysis utilizing FPD-8010E Software.

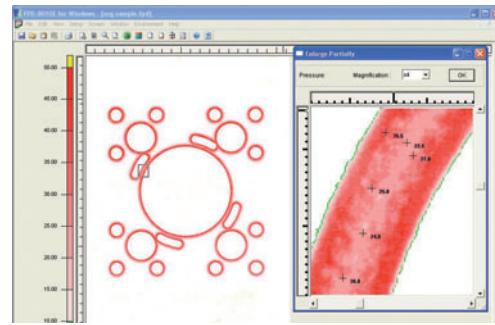
Functions

Overall Measurement



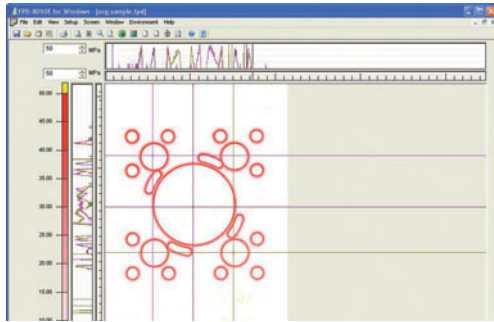
Various data such as average pressure and maximum pressure are displayed.

Partial Enlargement



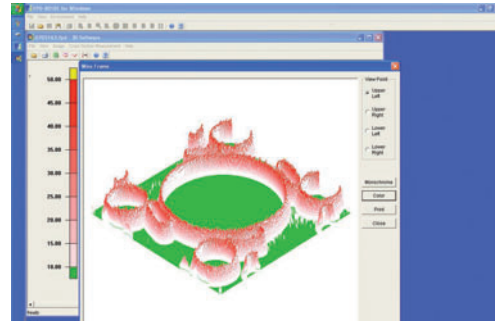
The specified field is enlarged. (X 4, X 8, X 16)

Pressure Cross Section



Pressure distribution on a line passing through a specified point is shown on a line graph.

Wire Frame



Pressure is displayed in 3-D format.

Total Weight Distribution

The upper and left segments of the total pressure are displayed on a bar graph.

Histogram Analysis

Pressure on the circumference is displayed as a histogram.

Text Data Output

Pressure data is exported to a text file.

Pressure Distribution Animation

Step-by-step pressure values are displayed in animated format.

Specifications

Product Name	FUJIFILM PRESSURE DISTRIBUTION MAPPING SYSTEM for PRESCALE
Model	FPD-8010E
Main Functions	Prescale image input function Pressure distribution display function/Pressure data output function 3D display function/polar coordinate display function
Scan Sizes	Single Read: 297mm X 210mm (11.7 in X 41.3 in) Maximum: 891mm X 1050mm (35.1 in X 41.3 in)
Resolution	0.125 (200dpi) , 0.25 (100dpi) , 0.5, 1, 2mm sq.
Dedicated Cover Weight	570g
Dedicated Cover Dimensions	70 (H) × 290 (W) × 364 (D) mm

Packed Items	Dedicated software, dedicated cover, calibration sheet, installation manual, software license
Scanner	Please ask your dealer for information on recommended scanner types.

Recommended Software Environment

OS	Windows® 2000 Professional SP4 and more Windows® XP Home Edition Windows® XP/ Professional SP2 and more Windows Vista™ Business Windows Vista™ Home Premium
CPU	Pentium® III 1GHz or Higher
Memory	512MB or more
Display	XGA or better, 65,000 colors or more

Prescale Product Lineup



Product (Code)	Product size W(mm) × L(m)
Ultra Super Low Pressure (LLLW)	270 × 5
Super Low Pressure (LLW)	270 × 6
Low Pressure (LW)	270 × 12
Medium Pressure (MW)	270 × 12
Medium Pressure (MS)	270 × 12
High Pressure (HS)	270 × 12
Super High Pressure (HHS)	270 × 12

*Pentium is a trademark of Intel. Windows is a trademark or registered trademark of Microsoft Corporation in the USA and other countries. All other brands and product names are trademarks or registered trademarks of their respective owners.