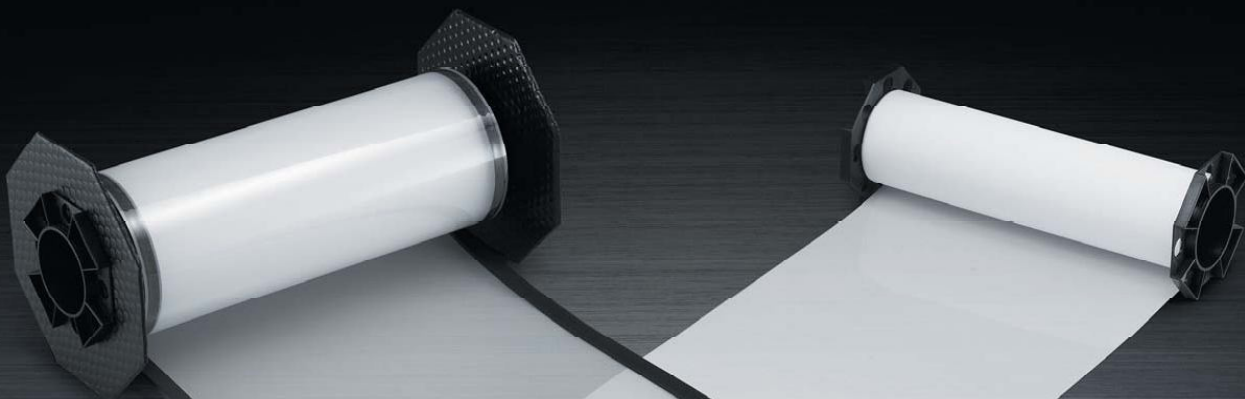
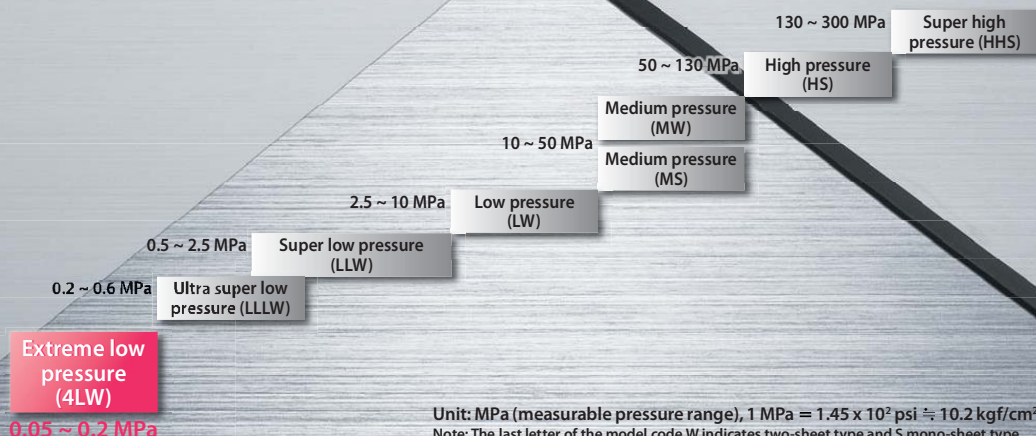




PRESCALE **Extreme low pressure**



**“Now Prescale’s pressure range
— down to 50 KPa! —”**



Unit: MPa (measurable pressure range), 1 MPa = 1.45×10^2 psi \approx 10.2 kgf/cm²
 Note: The last letter of the model code W indicates two-sheet type and S mono-sheet type.

The only one film in the world that can visualize contact pressure

■ For higher quality and higher reliability

Easy visual check of distribution/
uniformity for contact pressure

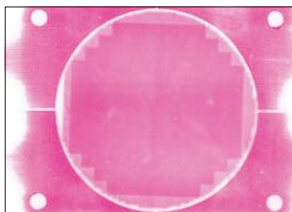
Contact pressure shown with differing concentrations
of color can even be converted into numbers.

■ Easy introduction for higher productivity

Lower cost with no special devices or equipment required

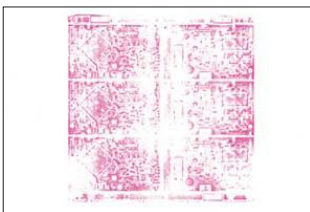
Quick measurement gives an at-a-glance picture.

Examples of application



■ Semiconductors

Adjustment of lamination roll pressure distribution
for back grinding tape and dicing tape



■ Printed circuit boards

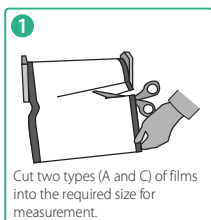
Adjustment of squeeze pressure distribution of
solder cream against printed circuit boards

■ Suitable for many other different applications

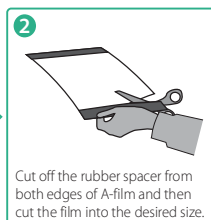
- Adjustment of pressure distribution of LCD panel assembly systems
- Adjustment of nip roll pressure balance of high-performance films
- Adjustment of pressure balance for lamination rolls
- Measurement of winding pressure for high-performance films
- Adjustment of pressure distribution for vacuum laminators
- Adjustment of polishing pressure distribution in semiconductor CMP processes
- Adjustment of lamination pressure distribution for multilayer printed circuit boards
- Adjustment of pressure distribution and flow check for fuel cell stacks

* The product may also be used for measurements other than those listed above. Please feel free to consult us.

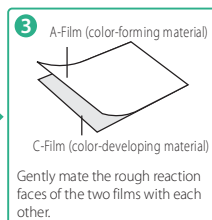
Simple and easy to use



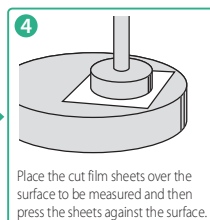
Cut two types (A and C) of films
into the required size for
measurement.



Cut off the rubber spacer from
both edges of A-film and then
cut the film into the desired size.



A-Film (color-forming material)
C-Film (color-developing material)
Gently mate the rough reaction
faces of the two films with each
other.



Place the cut film sheets over the
surface to be measured and then
press the sheets against the surface.



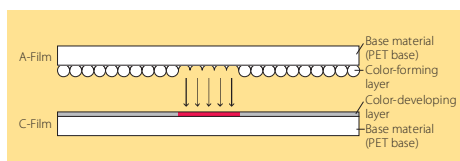
After pressing against the
surface, remove the sheets for
checking.

Note: Extra care should be taken in handling the extreme low pressure films. Do not touch, rub or bend the color-forming sheet surface.

Structure and principle (two-sheet type)

PRESCALE consists of two types of film: A- and C-films.

- A-Film : Base material (PET base) applied with color-forming material (microcapsules)
 - C-Film : Base material (PET base) applied with color-developing material
- The color-forming material side of A-film should be put over the color-developing material side of C-film. The mating pressure will break the microcapsules in the color-forming layer to give off the internal color-forming material. The color-developing material in C-film will absorb the color-forming material to develop red coloration through a chemical reaction.



Major specifications

Film type	Two-sheet type
Measurable pressure range	0.05 ~ 0.2 MPa = 7.25 ~ 29 psi \approx 0.5 ~ 2 kgf/cm ²
Product size	Effective width: 310 mm x 3 m
Accuracy	$\pm 10\%$ or less (measured by densitometer at 23°C, 65% RH)
Recommended service temperature	15 ~ 30°C = 59 ~ 86°F
Recommended service humidity	20% RH ~ 75% RH



* The specifications and performance data contained in this catalogue are subject to change without notice.

FUJIFILM
FUJIFILM Corporation



Distributed by: Spare s.a.s.
Via Gen.le Enrico Maretti, 1/A-1 - 27057 Varzi - Pavia - Italy
tel. +39-0383-54.51.51 - fax: +39-0383-54.50.51
<https://www.spare.it> - <http://www.prescale-film.com>
e-mail: sales@spare.it